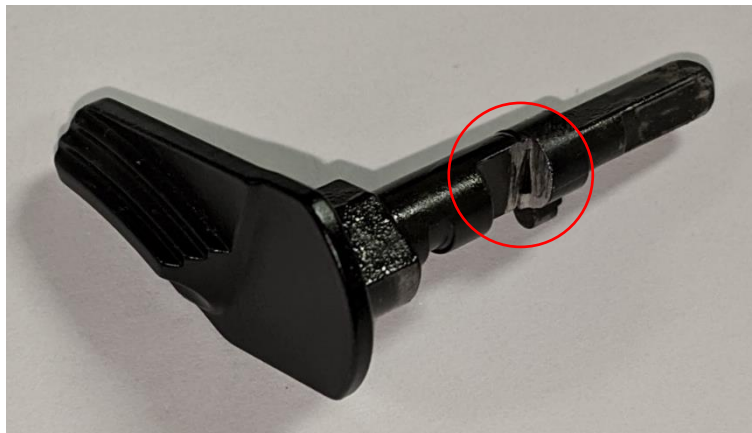
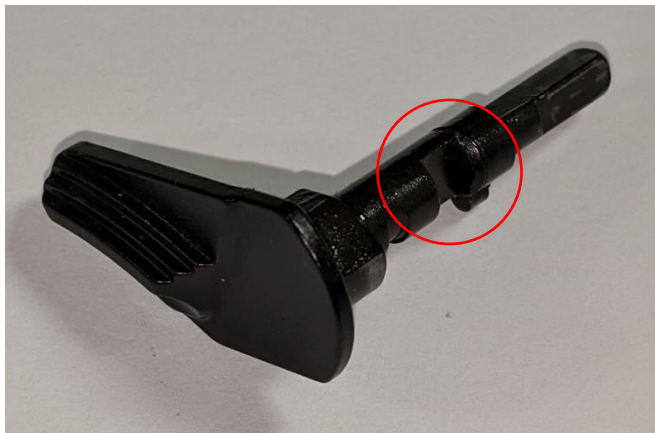


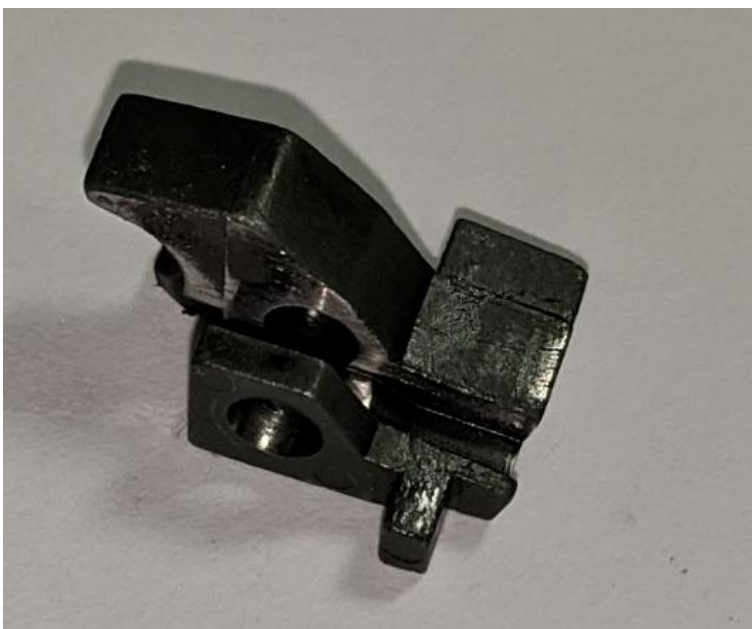
Omega Polishing



These instructions do not list everything that we polish in the shop but it should help eliminate the vast majority of stacking in the double action (when the trigger gets harder the further you pull).



The first area is on the decocker lever in the notch that the sear passes through while pulling the trigger. With the slide off the gun you can pull the trigger and watch the sear contact the edge circled in the pictures. Sometimes the sleeve that hold the decocker spring in place covers part of the cutout. If this is the case for your gun you should file the sleeve back to the edge of the cutout.



The next area to look at is the groove in the sear that the disconnecter rides in. These parts are metal injection mold made and sometimes mold lines are left in this groove which can make the disconnecter drag. You should file the sides of the groove and polish them smooth as shown in the pictures above. It also helps to polish the area of the sear that rests against the hammer (not shown here). Just make sure not to get the little peg that activates the lifter. This can delay hammer break and cause the gun to stop functioning properly.



You can also deburr the sides of the disconnect and polish the bottom of the hook that rides on the frame as you pull the trigger. Do not sand or polish on the area that protrudes out the side of the disconnect. Removing material from that area can result in stacking.